

MAN TECHNOLOGIES

2024

MAN TECHNOLOGIES
MINING DIVISION

COMPANY PROFILE

Transform your **Mining Operation** with our
Cutting-Edge Technology Solutions

Address

Wellness World Corporate Park, Block I,
Unit 4, Beethoven Street, Melodie Ext 4,
Hartbeespoort, 0216

Phone: +27 82 688 9763

E-mail: centralservices@mangroups.com

Website: www.mangroups.com

MAN TECHNOLOGIES

Immediate Insights

Enhanced Efficiency

Unparalleled Control

Industry leading in-house developed software

International footprint



MAN TECHNOLOGIES



MAN Technologies is a leading technology company specializing in data mining solutions. With a strong focus on source data capturing and advanced data analysis, MAN Technologies aims to provide businesses with immediate insights and enhanced operational efficiency. Our solutions are designed to deliver unparalleled control over data-driven decision-making processes.



Mission Statement:

"Our mission is to harness the power of advanced data mining technologies to capture, analyze, and deliver accurate and meaningful insights. We strive to enhance decision-making processes across various industries by providing innovative solutions through our Companion devices and the MAN DataKonsult platform."

Core Values:

- **Excellence:** We are dedicated to delivering high-quality products and services that exceed industry standards.
- **Safety:** The safety of our employees, clients, and communities is our top priority in all operations.
- **Innovation:** We continuously strive to develop and implement cutting-edge technologies and solutions to enhance efficiency and effectiveness.
- **Integrity:** We conduct business with honesty, transparency, and integrity, fostering trust and respect among our stakeholders.
- **Customer Focus:** We are committed to understanding and meeting the unique needs of each client, building long-term partnerships based on mutual success.



Core Specialities:

- **Source Data Capturing:** Utilizing our range of advanced Companion devices, we capture high-quality, real-time data from various sources to ensure comprehensive data collection.
- **Data Analysis and Reporting:** Through our proprietary MAN DataKonsult platform, we clean, analyze, and transform raw data into meaningful reports, providing end-users with actionable insights.
- **Industry Applications:** While we have a strong mining technology division, our expertise is not limited to the mining industry. We cater to a wide range of industries, including agriculture, civils, finance, healthcare, hospitality, labour, manufacturing, quarries and more.

Key Products and Services

- **Companion Devices:** Innovative devices designed for efficient and accurate source data capturing.
- **MAN DataKonsult Platform:** A robust platform for data cleaning, analysis, and report generation.
- **Customized Solutions:** Tailored data mining solutions to meet the unique needs of various industries.
- **Central Information Hub:** The Central Information Hub functions as a centralized data collection and analysis center.



Our Central Information Hub

1. **Data Collection:** Gathering data from a variety of client platforms and supplementary internal platforms.
2. **Data Consolidation:** Combining and organizing collected data into a unified format for easier analysis.
3. **Data Analysis:** Applying analytical tools and methods to interpret the data and derive insights.
4. **Reporting:** Creating and distributing detailed reports based on the analysed data, providing valuable information to clients.
5. **Platform Integration:** Ensuring seamless integration with client platforms and internal systems to streamline data flow.

This hub facilitates informed decision-making by providing comprehensive, accurate, and timely data insights.



Our Innovative Products delivers:

Immediate Insights

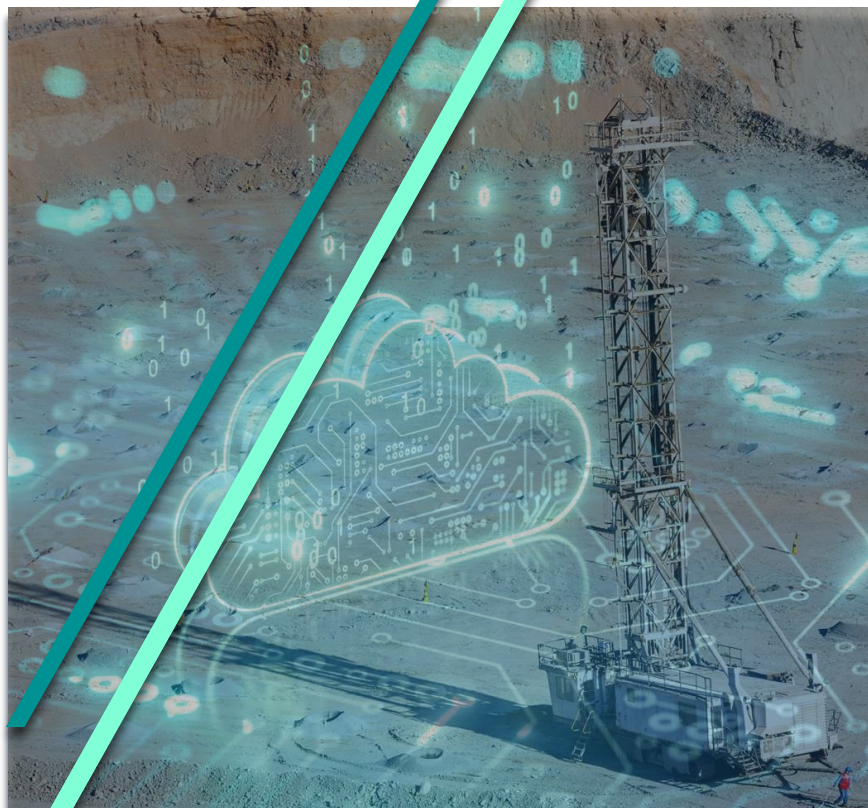
Enhanced Efficiency

Unparalleled Control



Industry Applications:

While we have a strong mining technology division, our expertise is not limited to the mining industry. We cater to a wide range of industries, including agriculture, civils, finance, healthcare, hospitality, labour, manufacturing, quarries and more.

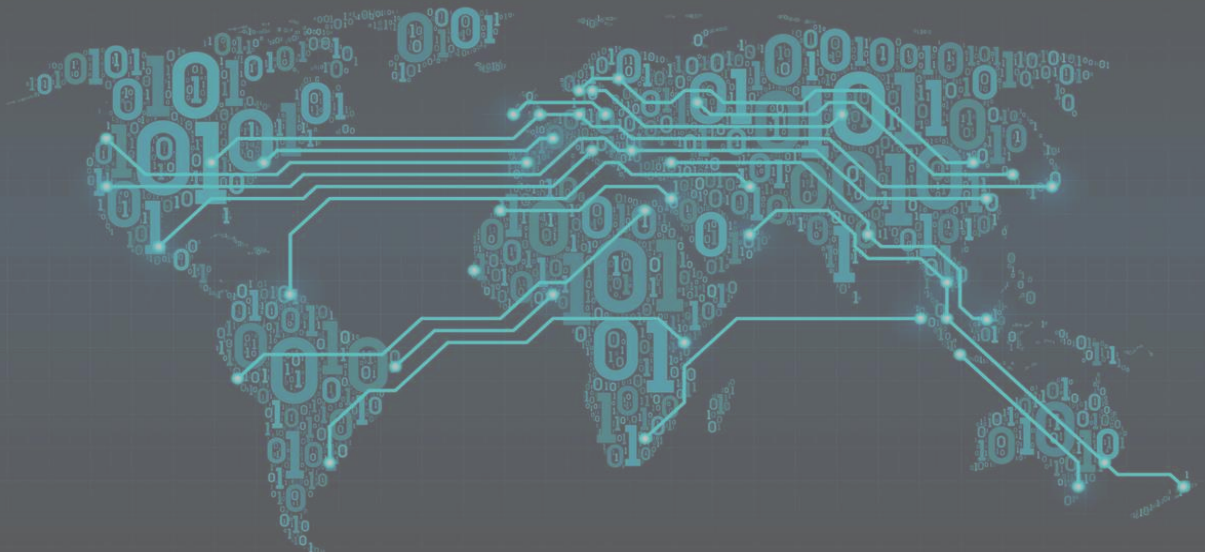


“Our Commitment to Excellence”

“MAN Technologies is committed to pushing the boundaries of data mining technology, enabling businesses to achieve new heights of efficiency and control. Join us on our mission to transform the way industries utilize data.”

Why Choose MAN Technologies?

- **Immediate Insights:** Our technology ensures quick data processing and immediate access to actionable insights.
- **Enhanced Efficiency:** Streamline operations and improve productivity with our advanced data solutions.
- **Unparalleled Control:** Gain complete control over your data and make informed decisions with confidence.



“Our downstream benefits realised for our clients”

Drilling



Identified average overclaims of 6552 m (out of 89 000m) on average per month by Contractors on drilling meters for a Client:

Value = 6 552 m x R 190/m (Hard Rock Cost - Dry Rate) = R 1 244 880 per month.

(Pilanesberg Platinum Mine)

Recovered on average 2230 m (17 000 m total claim running 3 drill rigs) for a Contractor that a client was unwilling to pay:

Value = 2 230 m x R 190/m (Hard Rock Cost - Dry Rate) = R 423 700 per month.

(Sedibelo Kgabo Mining)

Load & Haul



Through our strategic improvement of the drilling practices the Mining operation increased from a total of 1,35 million bcm to 1,6 million bcm with the same equipment burning the same number of hours, incurring less property damages, decreased fuel burn, increased GET -& -tyre life.

A total saving of R 17 million per month (18 %)

(Tharisa Minerals 2020 to 2022)

“Our downstream benefits realised for our clients”

Fuel



Structured reporting within the SARS requirements enabled us to claim fuel rebates of R3.9m over a 1.2m litre eligible verified consumption per month:

Volume dispensed = 1 587 602 ltr,
Eligible verified consumption = 1 525 818 ltr
Claimable Volume = 1 220 655 ltr
Total SARS Rebate Claim = ZAR 3 928 067

(Wildebees Colliery)

Time & Attendance



Our T&A Module enabled remote clocking for employees not moving through turnstiles. False overtime claims were put to a stop.

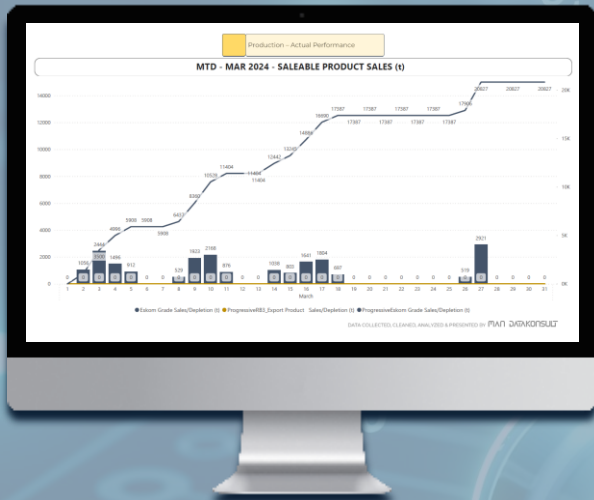
The monthly overtime was reduced with a total of ZAR 283 491 in the first month.

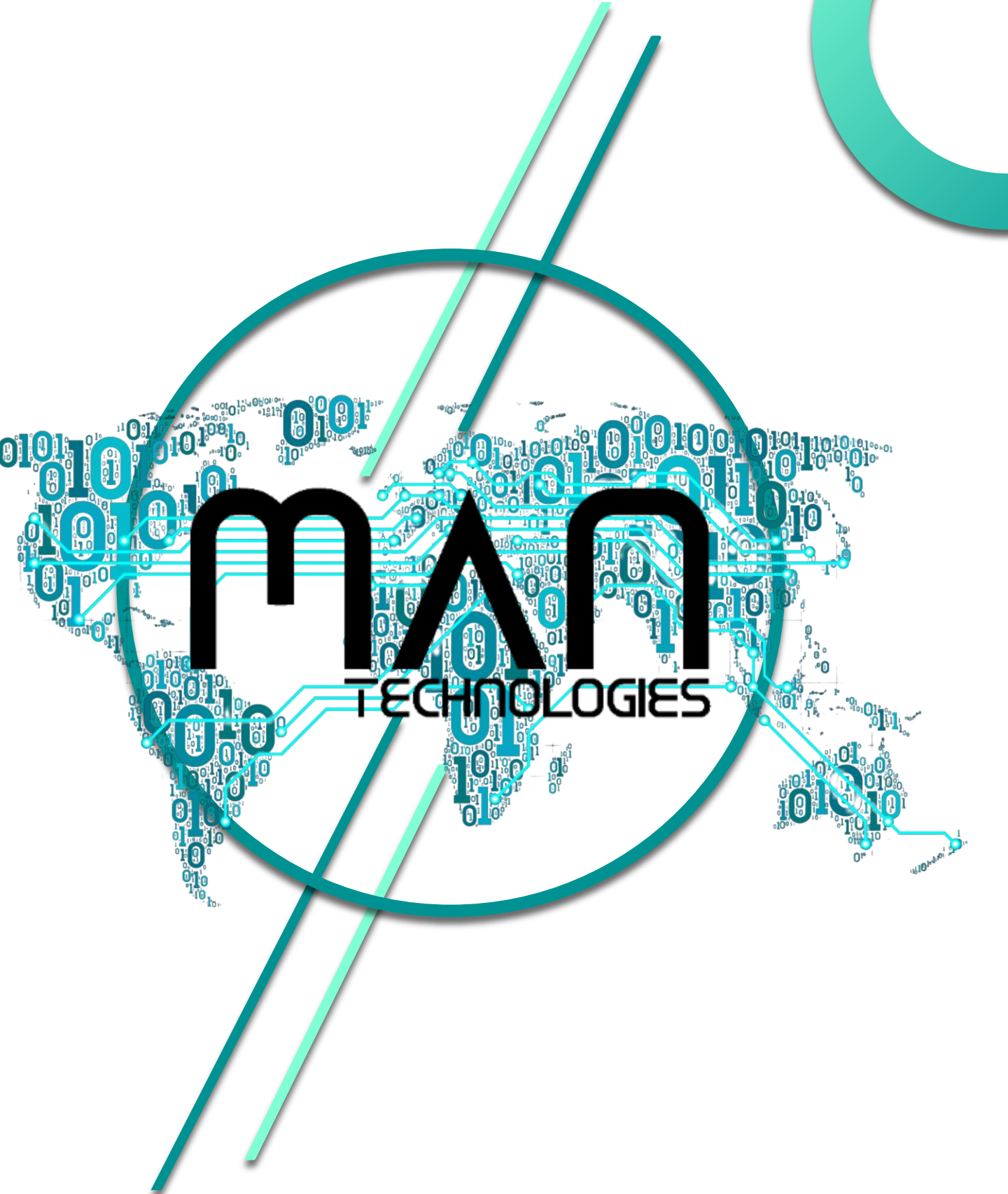
(Tractional)

“MAN ExactDrill software enables real-time drilling progress and precision with predictive floor mapping”



“MAN SIC platform enables real-time production reporting and Compliance-to-Plan through the Central Information Hub”





www.mangroups.com



LOCATION
Wellness World Corporate Park
Block 1, Unit 4
Beethoven Street
Melodie Ext 4
0216



PHONE
+27 82 688 9763



EMAIL
centralservices@mangroups.com